

SciTE Context Menu Extension

André Burgaud

2003-01-21

Windows SciTE Context Menu (WSciTEcm) is a context menu handler that gives the ability, on Windows, to quickly open selected files with the source code editor SciTE, Scintilla Text Editor, in Windows Explorer.

Summary

- **Product Name:** Context Menu Extension for SciTE
- **Date:** 12/06/2008
- **Operating System:** Windows 2000, XP, Vista, Vista 64-bit
- **License:** Open Source Software, MIT License
- **Source Code:** <https://github.com/andreburgaud/wscitecm>]
- **Download Binaries:** wscitecm140.zip
- **Download Source:** wscitecm140_src.zip

Installation

For a friendly installation, I recommend to use either the SciTE setup provided by Bruce Dodson or the SciTE Installer maintained by Troy Simpson. Those Windows installers greatly facilitate the deployment of a custom built version of SciTE and includes additional helpers such as the Context Menu Extension. Check the choice *Register shell extension* during the installation process.

For a manual installation, read the section **Manual Installation** below.

Manual Installation

1. Copy `wscitecm.dll` in the *SciTE* directory. Refer to the section Unload the DLL below if you have the error: `Access is denied`.
2. In the *SciTE* directory installation, type the command: `regsvr32 wscitecm.dll`. This registers the DLL. A new entry `Edit with SciTE` is available in the menu displayed when you right-click on selected files in Windows Explorer.

Installation on Vista 64-bit

The package containing the binaries includes `wscitecm.dll` and `wscitecm64.dll`. On Vista 64-bit, use `wscitecm64.dll`.

Dependencies

Versions 1.3.0 and 1.4.0 were built with Visual Studio 2005. Therefore, you may need to download and install the corresponding redistributable packages. Here are the Microsoft URLs for the redistributable packages:

Uninstallation

- Due to the introduction of a different GUID in version 1.4.0, it is important to uninstall any version up to 1.3.0 prior to installing any 1.4.0 and above version. If you forget the uninstallation step, you may

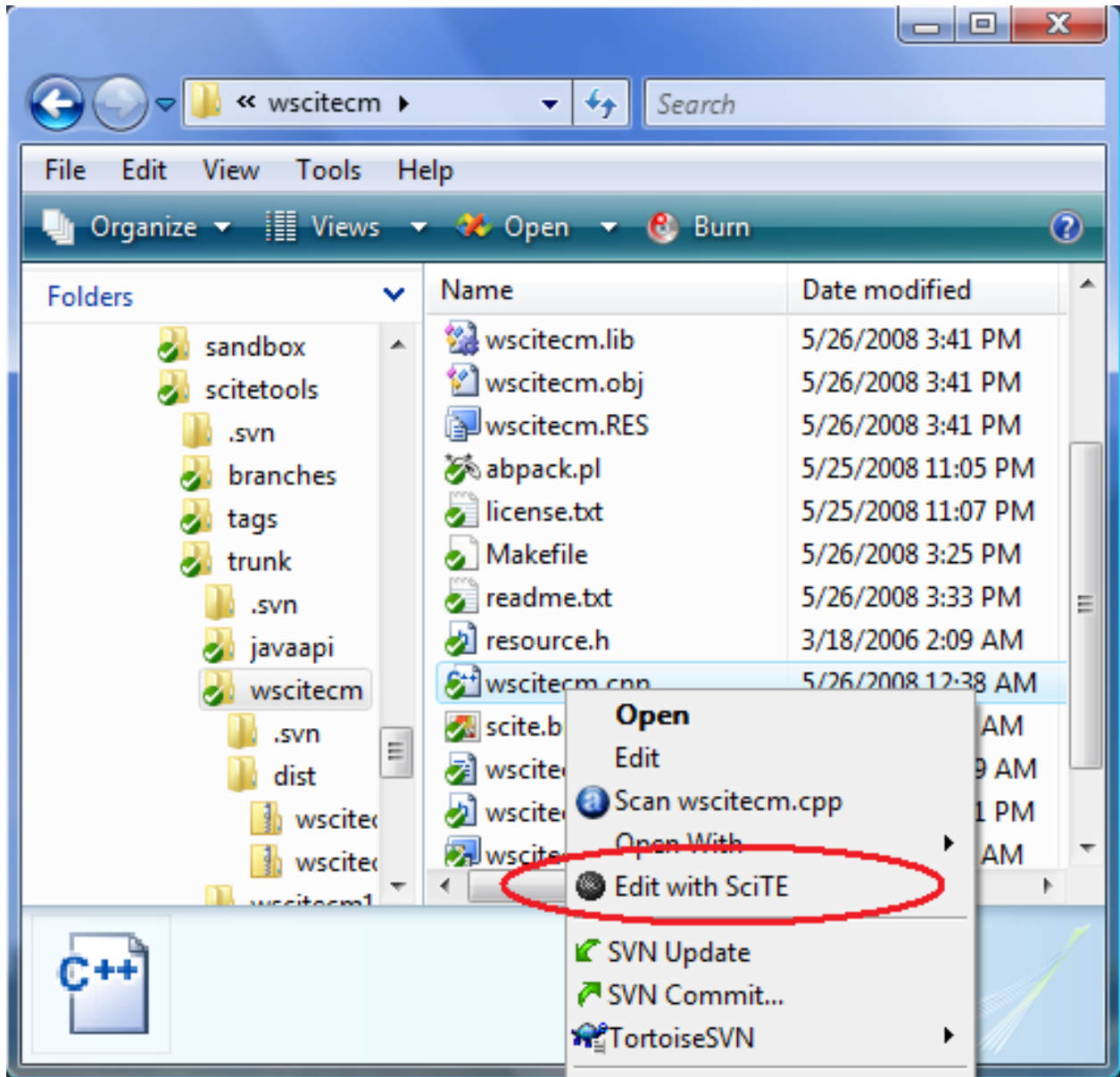


Figure 1: Windows SciTE Context Menu in Action

end up with two entries in the context menu. Nevertheless you can still solve this issue by editing the registry or simply by using *wscitecm-remove.reg* as explained below.

- To uninstall a 1.2 version and above:
 - In the SciTE directory installation, run the command: `regsvr32 /u wscitecm.dll`
- To uninstall a version prior to 1.2:
 - Double-click on the file `wscitecm-remove.reg` (included in the source and binary packages). This will clean-up the old registry keys. This script was provided by Bruce Dodson.

Unload the DLL

If you try to delete or override the *wscitecm.dll* and you get the error *Access is denied*, it means that the library is already loaded. There are several options to workaroud this issue:

- **First solution:** Close all the Windows Explorer instances open on your desktop and copy *wscitecm.dll* using the command line (Example: `copy wscitecm.dll scite_directory`).
- **Second solution:** Reboot the computer and delete or override *wscitecm.dll* (Example: `copy wscitecm.dll scite_directory`) before starting Windows Explorer and before using the context menu.
- **Third solution:**
 1. Open a command line window
 2. Press **Ctrl+Alt+Del** to display the Windows Task Manager, display the Process tab and kill the *explorer.exe* process.
 3. If the explorer did not restart automatically, start it manually from the command line window by executing `explorer`.
 4. Delete or override `wscitecm.dll` before using the context menu (Example: `copy wscitecm.dll scite_directory`).

Build

Until version 1.2.1, `wscitecm` was built with Visual C++ 6.0. Versions 1.3.0 and 1.4.0 were built with Visual Studio 2005. A `Makefile` is provided with the sources: in the source directory, type `nmake`. Ensure that all the environment variables and paths are set correctly. To do so, use the command file `VCVARS32.BAT` available in the bin directory of Visual C++ installation.

Downloads

- `wscitecm140.zip`
- `wscitecm140_src.zip`
- `wscitecm130.zip`
- `wscitecm130_src.zip`
- `wscitecm121.zip`
- `wscitecm121_src.zip`

Release Notes

- Version 1.4.0 (12/06/2008):
 - Fixed an issue with the manifest file introduced with the Visual Studio 2005 compilation
 - Created a new GUID to avoid conflict with Notepad++ reusing this `wscitecm` code with the same GUID
- Version 1.3.0 (05/28/2008):
 - Paul Roukema implemented fixes to provide support for Windows Vista 64-bit
 - Built with Visual Studio 2005
 - Fixed warnings related to string functions
- Version 1.2.1 (01/21/2003):
 - Released under the MIT License and packaged with the source code

- Version 1.2:
 - Registration and unregistration of the Shell Extension embedded in the DLL (`wscitecm.dll`)
 - SciTE icon displayed in the context menu.
- Version 1.x:
 - Initial version.

Derived Work

To address personal requirements, Angelo Mandato has been maintaining a forked version of WSciTEcm since 01/27/2004.

Legal

Microsoft and Windows are either registered trademarks or trademarks of Microsoft Corporation in the United States and/or other countries.